

Shawnee County Conservation District Land Pride No-till Drill

Latest Update 4/7/21

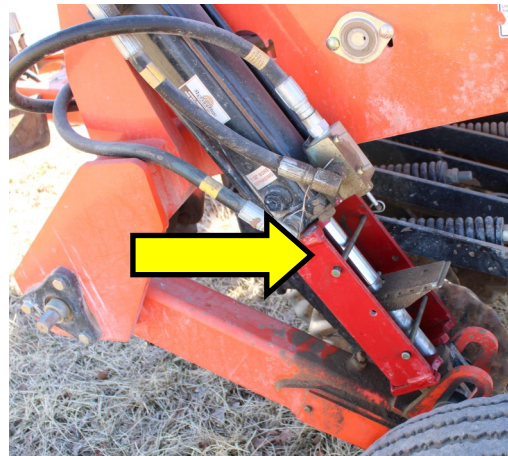
Usage— Setting Seeding Rate

Tipping Hazard: Do Not Stand On Back Of Drill Without It Attached To A Vehicle or Tractor.

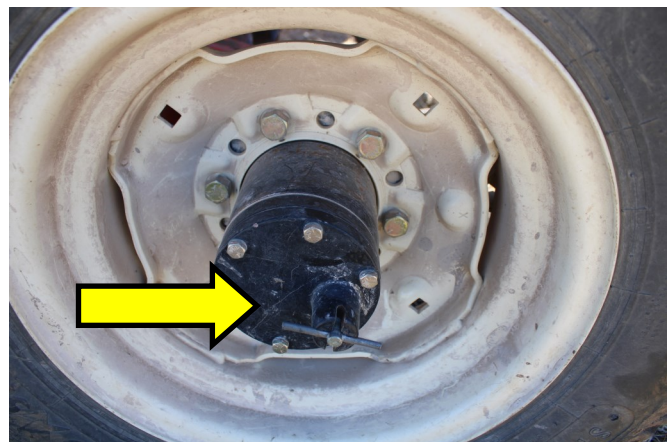
- Hitch up drill to tractor.
**REMOVE JACK STAND FROM DRILL AND STORE. LEAVING IT ON THE TIRE WILL HIT IT IN A TURN.



- Secure hydraulic hoses to tractor so hydraulics can be operated.
- Then lift drill and remove “Safety Lockup Brackets”, one on each side and store.



- Once in field, lock in the drive mechanism in the right hand tire hub.



Reverse all of the steps above when done with the drill.

- ◇ When drilling, NEVER BACK UP WITH DRILL IN THE GROUND
- ◇ In a tight turn raise up the drill and set back down when out of the turn

Adjusting The Seeding Rate

Tips for Setting the Seeding Rate

**Some of the smaller sized seed can be drill in either the FRONT or REAR box. If you have only a small amount of seed to drill, if there is a choice, use the REAR box.

**Put only half of your seed in the drill at first. Watch the acre meter. Stop and check seed amount verses acres drilled.

**Set drill to apply about 80 – 90 percent of the seed the first time over. Less chance of running out.

The drill has three seed boxes.

Setting The Drill

Select box that matches the kind of seed you are planting.

Find seed rate in the appropriate chart.

Set Drill.



[Front Box is the Main Seed Box]

Locate the seed type you plan to plant. Charts Pages 8 – 16

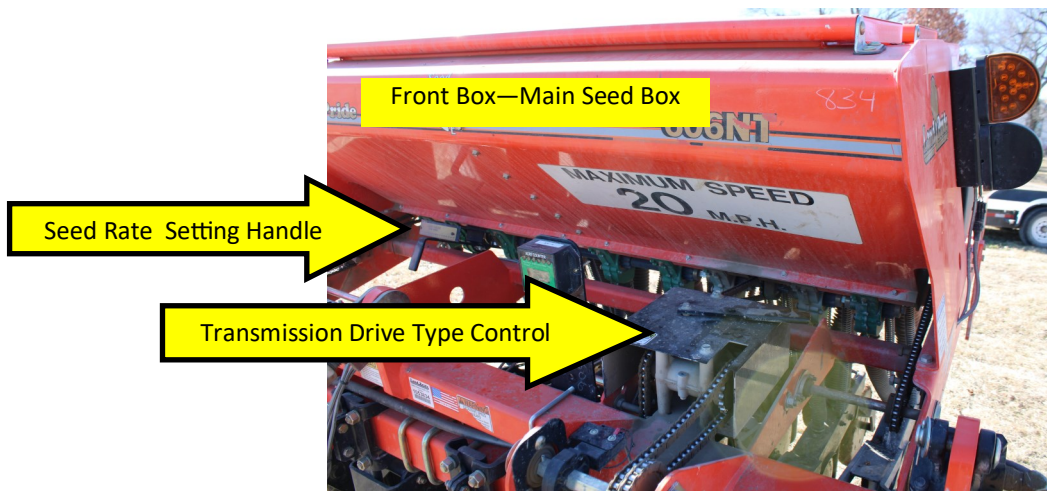
Seeds listed In the (MAIN SEED BOX) for drilling In (*Front Box*).

Alfalfa, Bahia Grass, Barley, Buckwheat, Buffalograss, Bermuda Grass, K-31 Fescue, Flax or Sudan, Eastern Gamma Grass, Kentucky Blue Grass, Millet, Milo, Oats, Orchard Grass, Peas, Pinto Beans, Rape, Rice (Long Grain), Rice (Short Grain), Rye, Rye Grass (Perennial), Soybeans, Sunflower, Tiffany Teff (Coated), Wheat, Wheatgrass.

Find the planned seeding rate in the appropriate chart for which you are drilling.

Setting the drill. Pages 2.- 4. The (MAIN SEED BOX) or the (*Front Box*) has two things to set.

Match the **Drive Type** to the **Seed Rate Handle Setting** with ESTIMATED desired pounds to be drilled.



Adjusting The Seeding Rate

[Center Box is the Native Grass Box]

This box is for the fluffy native grass and for brome grass. Chart Page 31

Setting the drill. Page 2 and 24. The (NATIVE GRASS BOX) or the (*Center Box*) has two things to set.

Match the **Drive Type** to the **Final Sprocket Setting** with ESTIMATED desired pounds to be drilled.

Adjust **Drive Type 1** through 4 (*Located front right of drill*)

The **Final Sprocket** gear is under the cover on the right side of drill. The extra sprockets are behind the cover on the left side of drill. If in doubt, leave the default gear of “23” in place.

Changing Gears: You will need (2) 3/4 inch box end wrenches and (1) 1/8 inch hex key wrench to change out the gears. Take care not to lose wing nuts, washers, hex screws or metal key that keeps gear from spinning on drive shaft.

Note: For **Native Grass**, Transmission Drive Type set to “1” and “23” tooth sprocket seems to be the one to use. For **Brome Grass**, Transmission Drive Type set to “1” and “23” tooth sprocket puts on the lowest rate of just under 13# per acre. A gear change is needed for greater rate. Rate shown is bulk pound not pure live.



Photo shown with safety cover off. Replace as soon as gears change has been made.

Adjusting The Seeding Rate

[Rear Box is the Small Seed Box]

Locate the seed type you plan to plant. Charts Pages 21 - 22

Seeds listed in the (SMALL SEED RATE CHART) for drilling in (*Rear Box*).

(Alfalfa, Red Alsike, Crimson Clover), (Kentucky Bluegrass, Fescue, Annual Rye Grass), (Bermuda, Red Top, Lespedeza Unhulled, Weeping Love Grass), (Red and Sweet Clover, Lespedeza Hulled), Orchard Grass), (Millet, Reed Canary), (Birdsfoot Trefoil, Sudan).

Setting the drill. The (SMALL SEED BOX CHART) or the (*Rear Box*) has one thing to set.

Match the **Seed Rate Handle Setting** with ESTIMATED desired pounds to be drilled.

Note: A mix of forbs/legumes, use the Alfalfa setting in the chart at a lighter setting. Also add seed as you go to reduce seed sorting to have a better distribution of all species in the mix.



Planting Depth Control

Be sure and monitor the planting depth.

- ◆ Drive wheel must be running on the ground for drill to plant.
- ◆ The press wheel in the rear helps to control planting depth. Is the area tilled, firm, no-tilled.? In soft ground the front coulters can be ran more shallow by not running them as deep by adjusting the stop on the wheel cylinder.



The further up the press wheel lever the shallower the seed will be placed.

For small seed (grass, clovers, radish, turnip)

⇒ Have press wheel positioned clear up or one notch back.

Corn, oats, peas, soybeans

⇒ Have press wheel three to four notches back.

